

# Installation Diagram of Ultra-thin Wall-mounted Telescopic TV Bracket

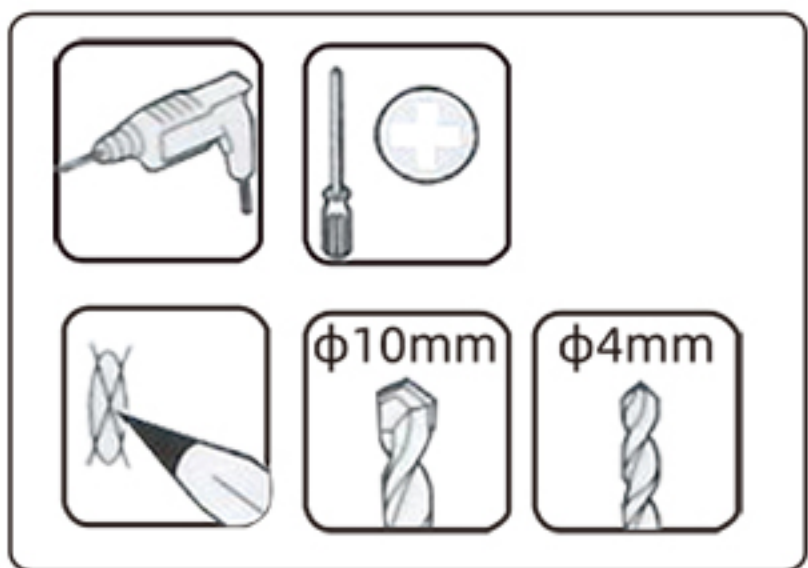
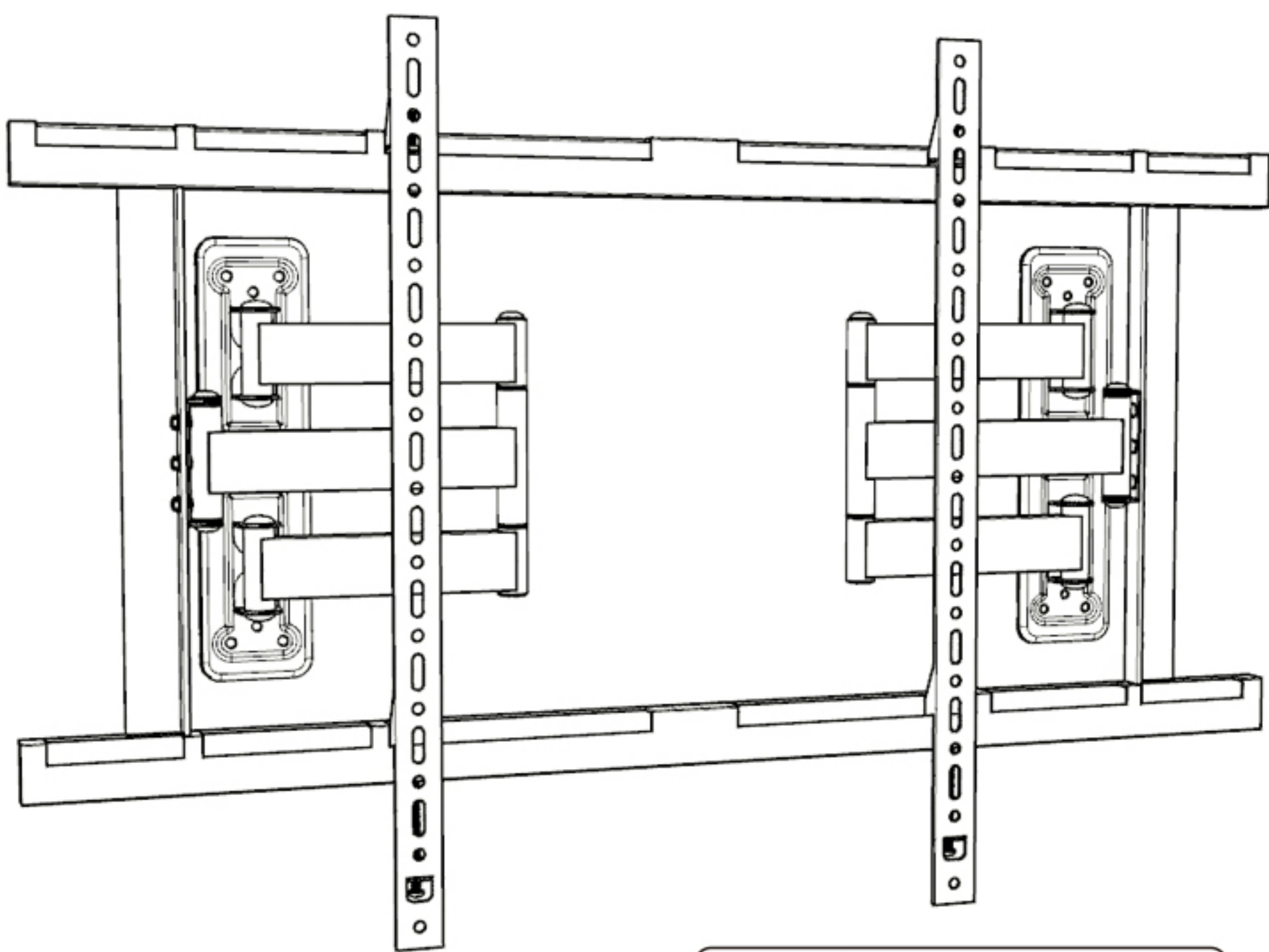
Applicable Model: DY834-T



**Precautions before Installation**



For solid walls and walls made of cement concrete, it is recommended to use 11/12mm drill bits for hole drilling with caution.



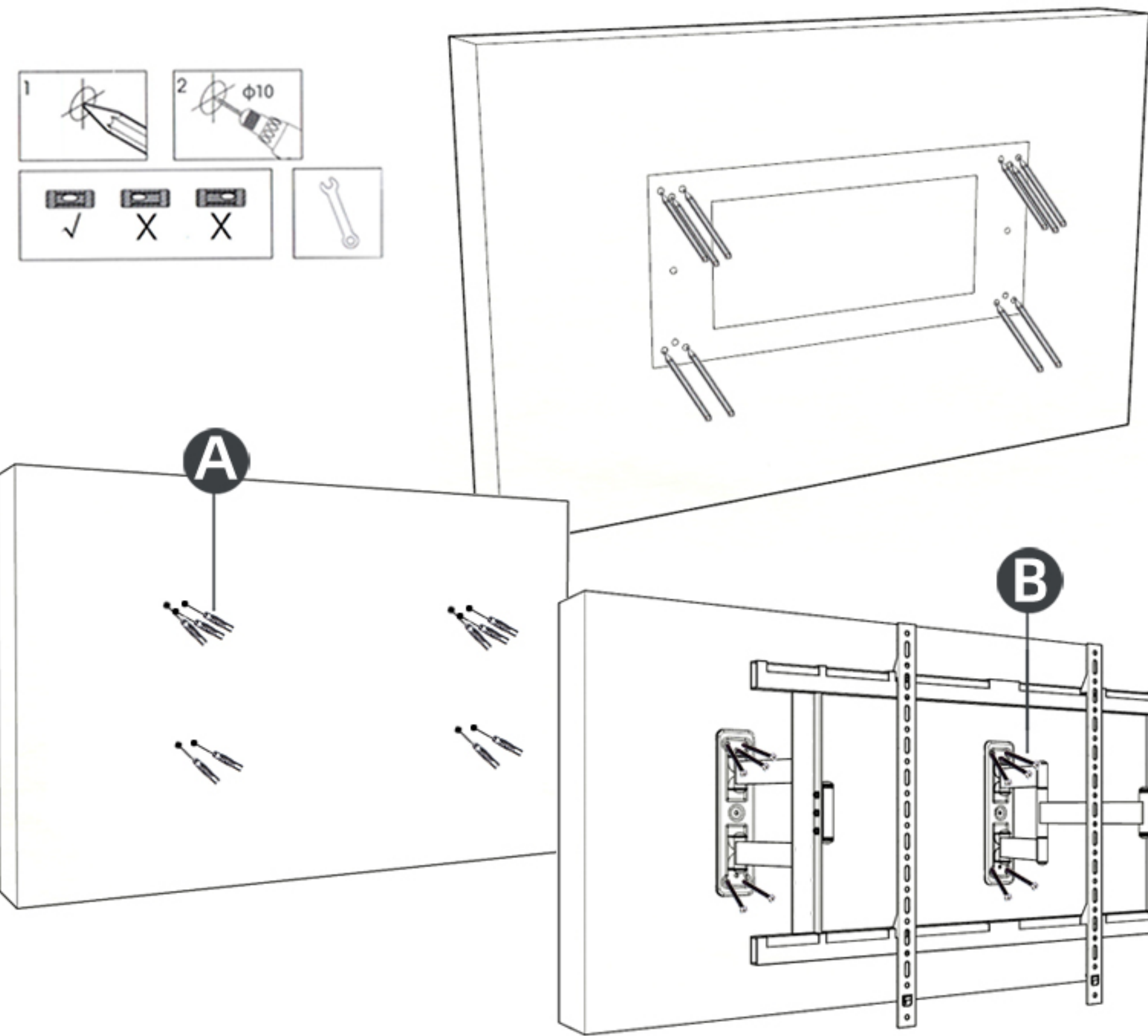
The above tools need to be prepared by yourself.

<b>A</b> φ10*φ7*70mm 	<b>B</b> 7*70mm 	<b>C</b> M6*16mm 	<b>D</b> M6*20mm 
<b>E</b> M6*25mm 	<b>F</b> M8*30mm 	<b>G</b> φ16*φ6.2*5mm 	<b>H</b> φ16*φ6.2*1.5mm 
<b>I</b> M5 	<b>J</b> M4 	<b>K</b> 10mm 	

## Step 1 Install the main bracket onto the wall.

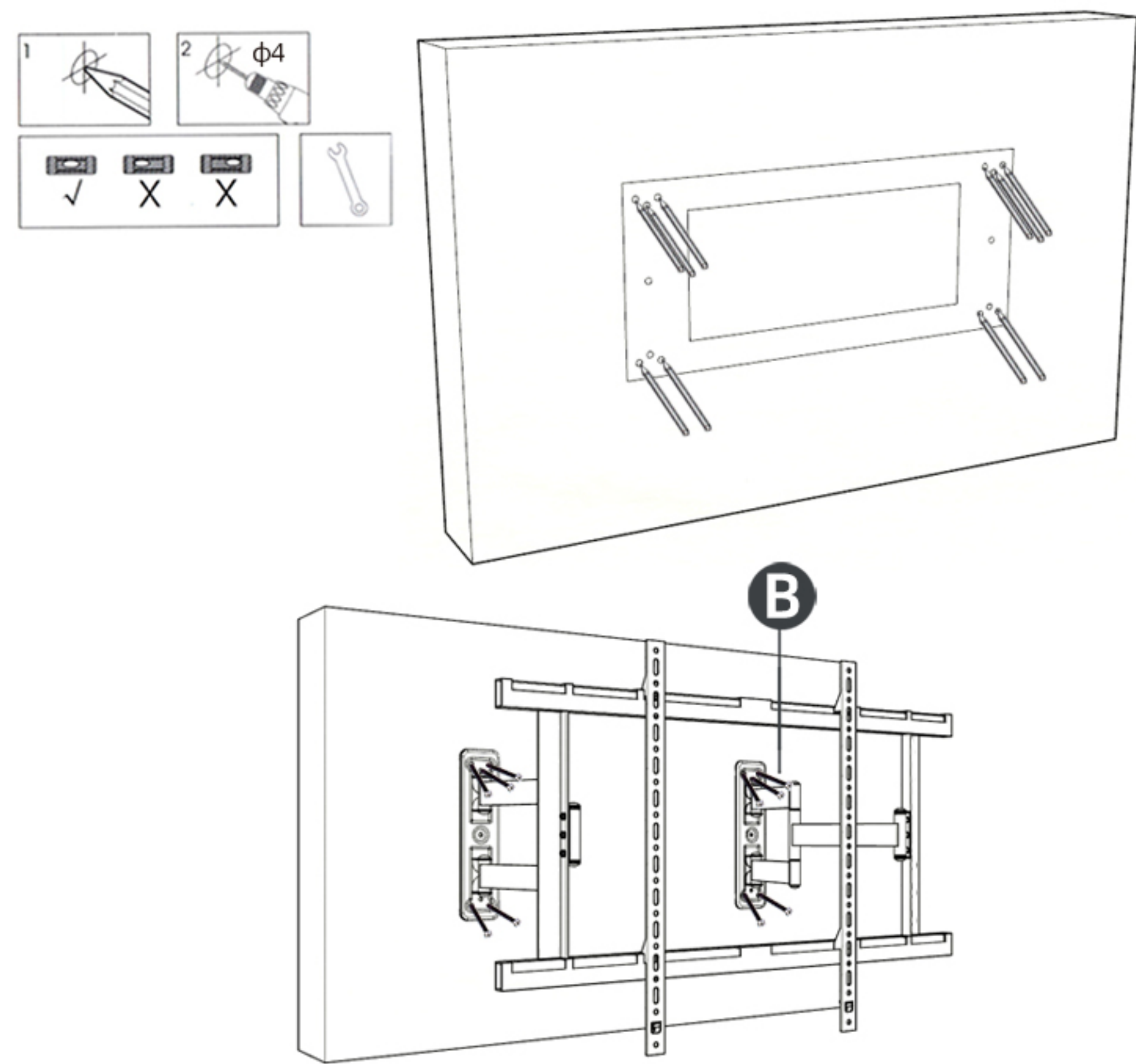
### 1-a Installation of the main bracket on common brick walls

Take out the wall hole positioning paper and the bracket. Measure the positions of the wall holes, use the wall hole positioning paper to drill holes at the predetermined positions. Put the expansion tubes into the holes. Then screw the expansion screws through the holes on the wall panel of the bracket into the expansion tubes in the wall. Make sure the screws are tightened and the bracket is firmly fixed.



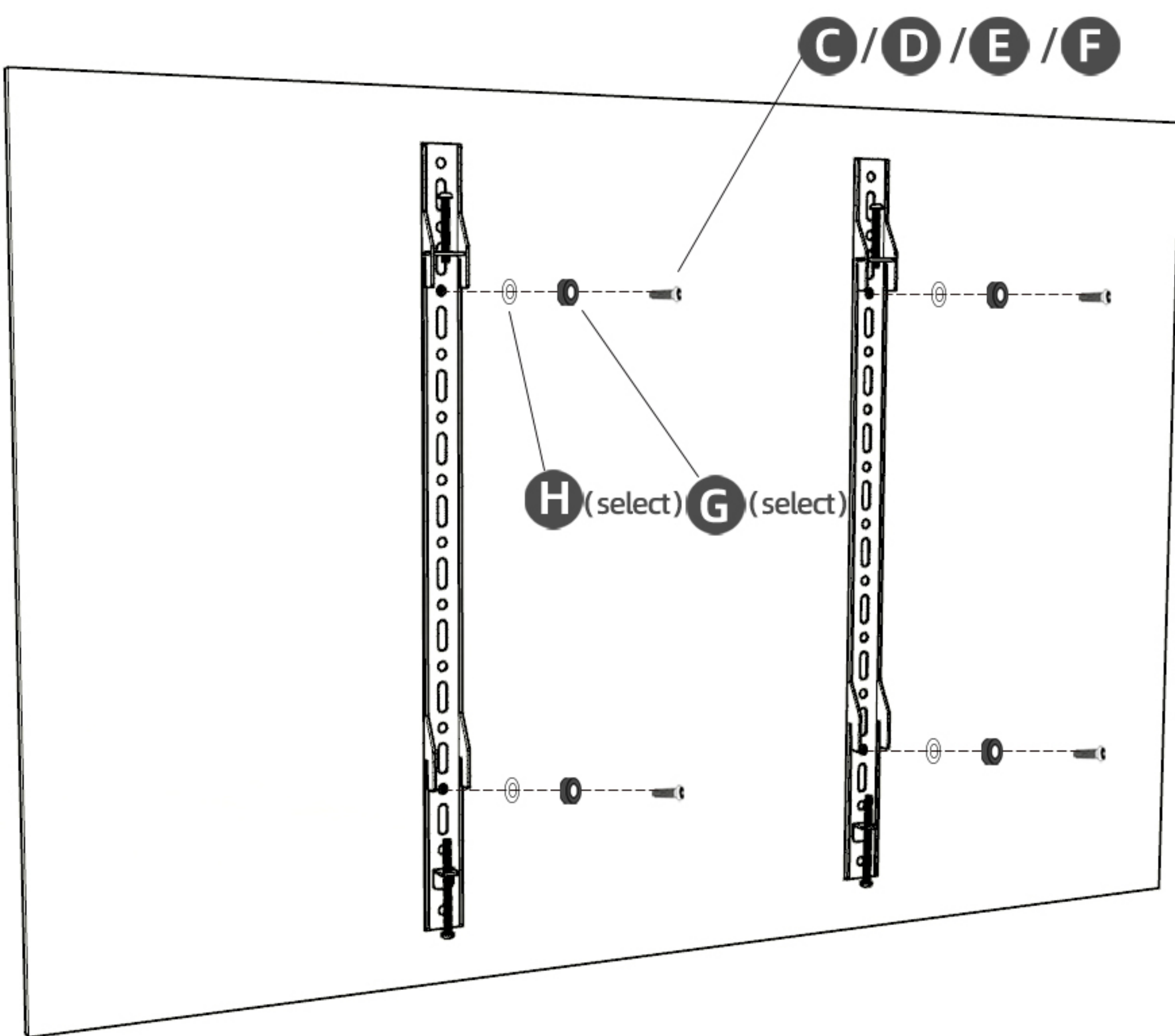
### 1-b Installation of the main bracket on wooden stud walls

Take out the wall hole positioning paper and the bracket. Measure the positions of the wall holes, use the wall hole positioning paper to drill holes at the predetermined positions. Then screw the expansion nails through the holes on the wall panel of the bracket into the wall. Make sure the screws are tightened and the bracket is firmly fixed.



## Step 2 Connect the TV to the bracket.

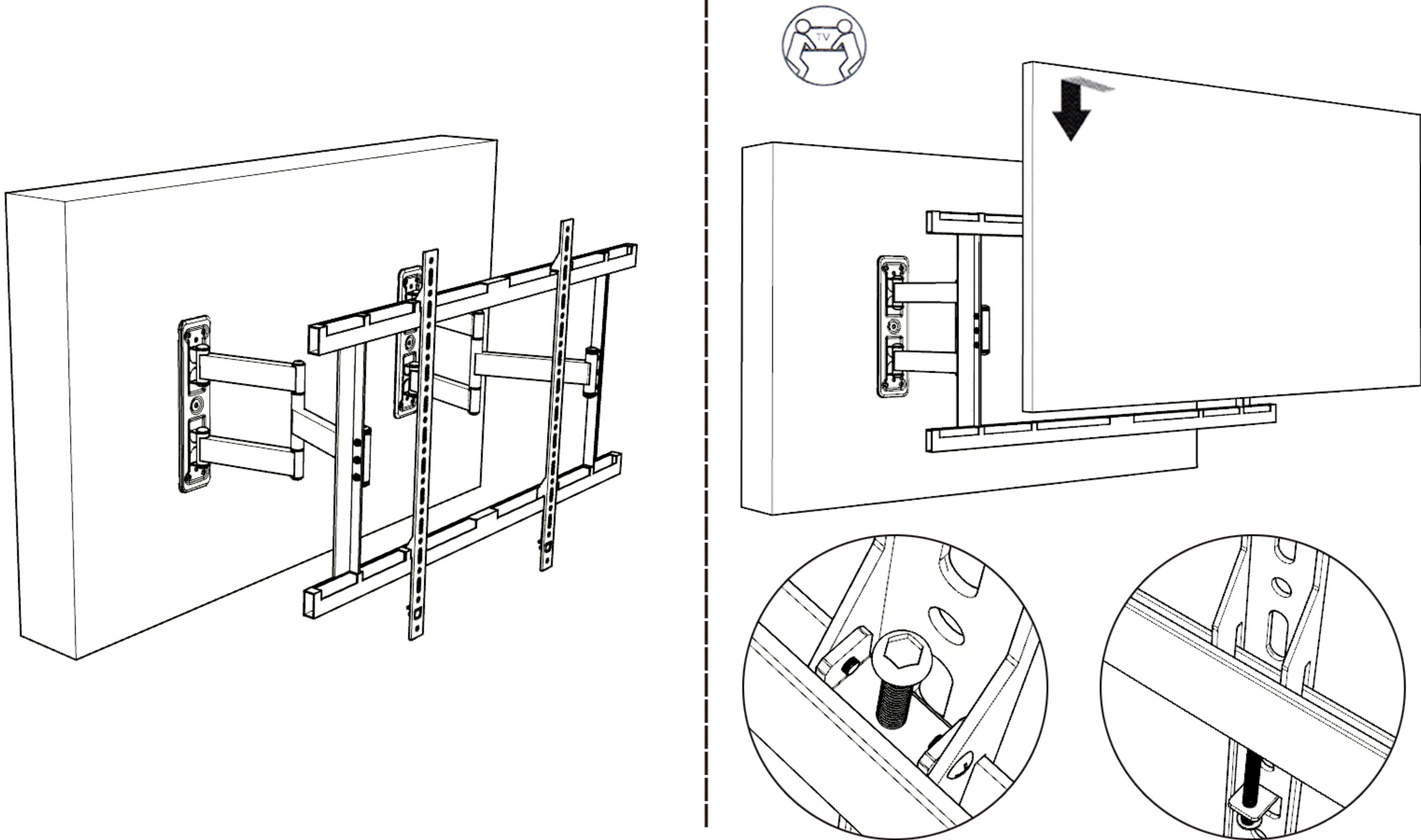
### 2-1 Connect the TV with Hooks



Select appropriate screws to connect the hooks to the TV. If the horizontal and safety screws on the top and bottom of the hooks block the installation holes, you can first remove the blocked screws. After connecting the hooks to the TV, reinstall the removed screws.

To avoid increasing the distance from the wall, try to choose screws of appropriate lengths for installation and use fewer or no washers/heightening columns.

### 2-2 Hang the TV onto the Crossbeam



First, pull out the TV bracket and then hang the TV hooks into the open slots of the crossbeam.